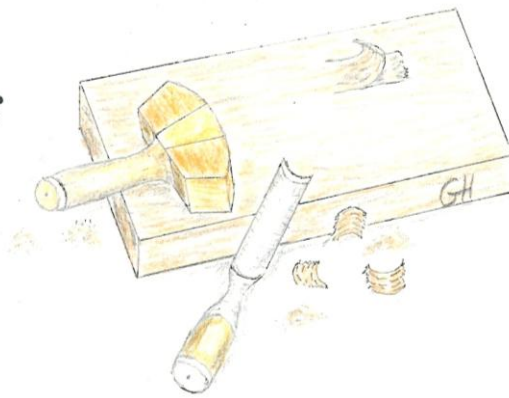


Peninsula Woodworkers Club



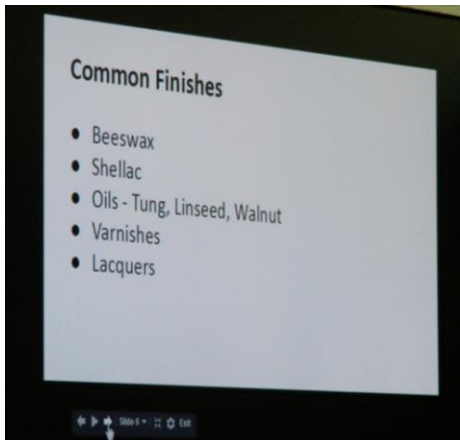
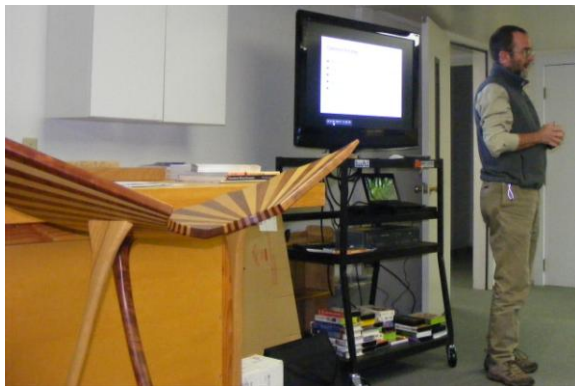
NEWSLETTER MAY 2014
Editor – Gary Haubold

WE WILL BE HAVING A MEETING at 7:00 pm on Thursday, May 1, 2014. Our meeting place will be at our regular meeting place at Hillcrest Baptist Church on Black Diamond Road, just south of the bridge which crosses Highway 101. Check the complete directions below at the end of this newsletter.

***** MEETING AGENDA *****

- *WELCOME and INTRODUCTIONS *
- *CLUB BUSINESS *
- *ATTENDANCE DRAWING *
- *SHOW AND TELL *
- *ROUND TABLE Sharpening *

We had a really good meeting with twenty people present. For those who were not present, this was an invaluable meeting for members who have questions about finishing their wood projects. Tim Lawson of the Port Townsend Woodworking School gave us a good overview of wood finishing. As I predicted this was a really good presentation.



Tim is a geologist by training. Why finish it? As Tim says to protect it, make it look good and feel good. Tim prefers to finish the surface with a blade – a scraper or plane. This leaves the wood surface smooth and ready to finish. He avoids abrasives if possible. If he has to sand he uses an 80 grit, eg. across grain and then uses a finish grit with the grain. When the cross sanding marks disappear you are done sanding.

Be careful of grit designations. American grit numbers may give you what you pay for. Buy a cheap paper and you get a cheap finish. Canadian and European papers use a P number designation and the grit sizes are closely controlled. Tim uses Norton champagne which comes in a roll.

FINISHES

Penetrating finish strengthens the material. Shellac and water base poly are film finishes.

Evaporative finishes are just that.

Cross link finish creates a chemical bond to the surface.

Cross link finishes and exothermic finish rags can cause fire. Store them under water.

Tim is not a big fan of polyurethane finishes.

Tung oil varnish creates a stronger finish because it makes longer polymer chains.

COMMON FINISHES Beware of Chinese stuff.

Beeswax – plus linseed oil makes a good finish.

Shellac – really likes its almost indefinite shelf life.

Oils –Tung (a long chain fatty acid), linseed (probably better than tung) and walnut (food safe except for nut allergies).

Varnish – have the brush fully charged with solvent then put it in varnish.

Lacquer – Tim does not like lacquers.

AVOIDING MISTAKES

Use fresh finish. Keep air out of the container.

Test panels – test panels - test panels – test panels. Keep some sample boards

AVOIDING HAZARDS

Read the MSDS which are required by federal law. Some of these chemical compounds have nasty affects.

Know your solvents - water, alcohol, mineral spirits, turpentine, acetone, lacquer thinner, catalyzed lacquer.

Manage ventilation and temperature. Have a rag bucket outside the shop. Avoid spontaneous combustion.

THREE PART FINISHES

Tung oil | Marine spar varnish | Turpentine (Thin for additional penetration). Flood on surface.

Sand in with 240 grit working the slurry. Add more finish. Use more finish to distribute. Rag it off. Repeat.

Play with finishes.

RECOMMENDED READING

FOOL PROOF WOOD FINISHING _ Teri Masachi

THE NEW WOOD FINISHING BOOK – Michael Dresdner

NEW TOPIC – The Board of Directors is considering the possibility establishing a web site. We are in the early stages right now. Watch for further news.

What would you like to learn about? Do you know of a speaker we could bring in? Pick up a magazine or surf the net for a topic, and then TELL the board of directors. In the little time I've cruised the net I've found some very interesting things. Let us know what you're interested in and we'll do whatever we can to make a program of it.

We (the Board of Directors) really are very concerned about our club and how to improve it. When I first joined the club it wasn't unusual to have an attendance of twenty-five and some pretty great meetings. We are working toward that end.

Annual dues are \$20.00. As a club we cannot survive if dues are not paid. That is a bargain compared to other organizations to which I belong. If you enjoy reading this newsletter, Great, because I sure enjoy doing it. Your dues pay for the postage and for guest speakers, and we've had some really great ones. I cannot really figure ink and paper costs because my printer is used for everything at home. That's a small contribution for the satisfaction I get from doing the newsletter. So you can see how important the dues are.

CLUB LIBRARY – The club has a nice library which is ordinarily open to members during regular meeting hours, which has an extensive collection of woodworking books, magazines, carving patterns and videos. We are always on the lookout for additional resources. We have some pretty neat things there.

MEETING AND CONTACT INFORMATION – Unless otherwise notified, regular club meetings are held in the downstairs fellowship hall at Hillcrest Baptist Church on Black Diamond Road which is just south of West Highway 101, about halfway between Albertson's Market and the Fairmount Restaurant. Turn north up the hill at the Pine Street intersection which is just down the hill from the bridge which crosses over Highway 101. Proceed up the Pine Street exit to the four way stop sign and turn left. Cross the bridge. You can now see your destination ahead on the left. The club meeting is held the first Thursday of the month 7:00 pm.

The Board of Directors meets at the church office at 2:00 pm the Tuesday following our monthly meeting.

CLUB MEETING

7:00 pm., Thursday, May 1, 2014

7:00 pm., Thursday, June 5, 2014

BOARD OF DIRECTORS MEETING

TBD

CONTACT US AT:

President – Jon Cash

VP – Mike Kurhajetz

Past President -

Avon Miller

Bruce Thompson

Newsletter Editor – Gary Haubold

928-9005

452-5850

928-3331

457-8460

457-6134

452-4919

E-mail ceresltd@msn.com

mckaywoodworks@aol.com

avon@olyphen.com

BGT@olyphen.com

GaryD@wavecable.com

REMEMBER – IF IT'S WOOD, IT'S GOOD

“For Sale: Wilton 10” wood working vise. New, never used. Reg. \$228.00, I would like \$100.00.

Porter Cable 24” Omni Jig w/ manual, video and some attachments. New, never used. Reg. \$605.00, I would like \$375.

***Bruce Thompson
457-6134”***

Phil Shive also has a Wilton wood working vise for sale.

PENINSULA WOODWORKERS CLUB
1234 W. LAURIDSEN BLVD.
PORT ANGELES, WA. 98363

APPLICATION FOR MEMBERSHIP / RENEWAL
PENINSULA WOODWORKERS CLUB

Please check applicable categories:

New member: _____ Renewing member: _____ Date: _____

Annual membership is \$20.00

Name(s): _____

Address: _____

City: _____ State: _____ Zip: _____

Telephone: (Home) _____ (Work) _____

E-mail: _____

How long have you been a woodworker? _____

What areas of woodworking interest you most? _____

Would you be interested in serving on a committee? Yes / No On the board of directors? Yes / No
